

Chapter 10

Using Templates

This chapter describes how to use templates to configure managed objects. You can use the templates supplied with the NMC-RX application, or you can create your own.

This chapter contains the following sections:

- Overview on page 148
- Configuration Tasks on page 148
- Applying Templates on page 149
- Previewing Templates on page 150
- Creating Templates on page 151
- Associating an Object Configuration with a Template Pak on page 153

Overview

The NMC-RX application enables you to set preconfigured values for the non-unique parameters of a particular object type and store these values under a template name.

You can apply either templates supplied with the NMC-RX application or those you create for the following objects:

- ATM interfaces
- ATM circuits
- BGP neighbors
- Bulk services
- DS0 bundles
- Frame Relay interfaces
- Frame Relay circuits
- PPP interfaces

If the NMC-RX application provides a template for the object you are creating, that template is applied to the object by default. But you can apply a different template when you create or configure an object. The template settings are applied to the non-unique parameters of the object. For existing objects, the template updates the current configuration of the object.

The NMC-RX application also lets you group a suite of object configurations together under the same name, thus creating a *Template Pak*.

Configuration Tasks

When using templates, you can perform the following tasks:

- Apply an existing template to an object.
- Preview a template before applying it.
- Create a template.
- Associate a template with a Template Pak.

Applying Templates

When you create an object, if the NMC-RX application has a default template available, that template sets the non-unique parameters of the object. You can, of course, replace the default template settings with another template.

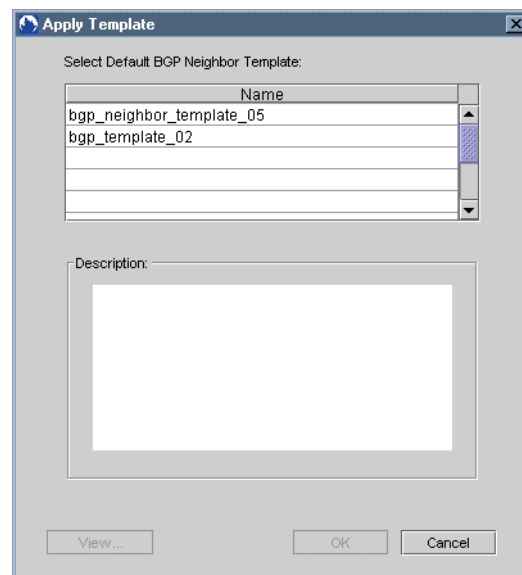
To apply a template:

1. In the Instance Explorer, select the object that you want to configure.
2. Right-click, and select Configure.

If there is a template that is applicable to the type of object you select, the Apply Template and Save As Template buttons are available in the Create dialog box or in the Configuration menu.

3. Click Apply Template.

The Apply Template dialog box appears with a list of available templates.



4. Select the template that you want to apply to the object.

To view this template before you apply it, click View. For more information, see *Previewing Templates* on page 150.

5. To apply the template, click OK.

The settings from the template appear in the object configuration. You can also customize these settings.

6. To save the settings, select Save in the work area.

Previewing Templates

Before you save a new template or apply an existing template to an object, you can preview the template.

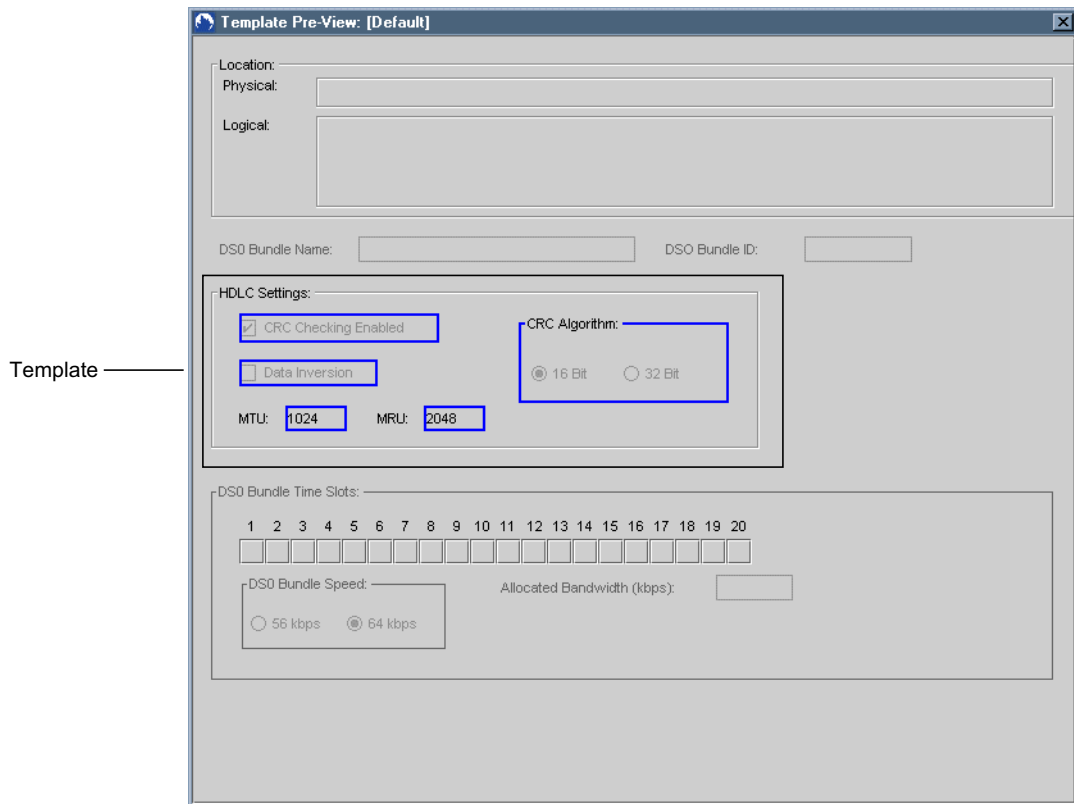


NOTE: When you preview a template, the parameters that belong to the template appear in blue. All other parameters are not part of the template and are not affected when you apply the template.

To preview a template:

1. In the Configuration menu, click either Apply Template or Save As Template.
 - The Apply Template dialog box has a View button.
 - The Save As Template dialog box has a Preview button.
2. Choose the appropriate action:
 - In the Apply Template dialog box, choose a template from the list, and click View.
 - In the Save As Template dialog box, click Preview.

In either case, the Template Pre-View dialog box displays the template settings, which are blue. In the sample dialog box shown here, the template settings are for HDLC.



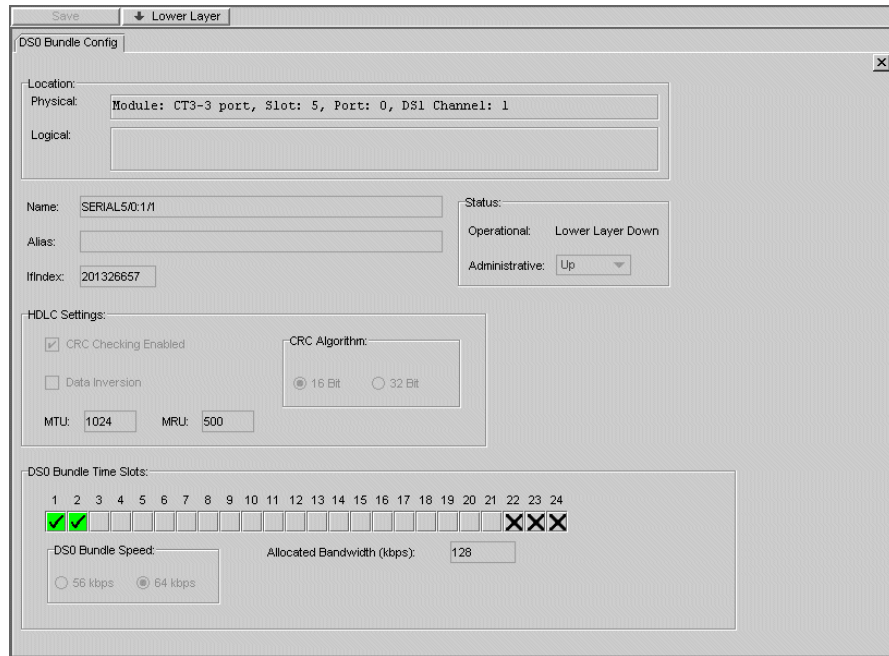
Creating Templates

This section contains a DS0 bundle example that describes how to create a template. Other objects may differ slightly, but the main concepts and procedures are the same.

After you configure an object, you can save the configuration as a new template for future use. The settings that are saved to the template are for parameters that are not unique to objects of the same type. For example, the name of a DS0 bundle is a unique parameter, but the High-Level Data Link Control (HDLC) parameters for the bundle are not unique.

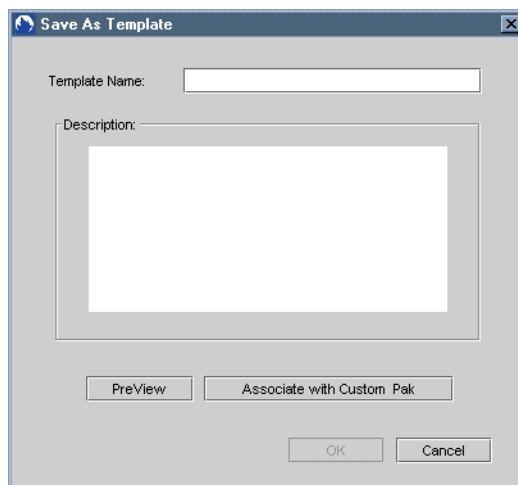
To save an object configuration as a template:

1. Open a configuration view for the object (for example, a DS0 Bundle view).



2. In the Configuration menu, click Save As Template.

The Save As Template dialog box appears.



3. For Template Name, type a name for your new template.
4. (Optional) Type a description of the template.

A brief description helps to identify the objective and settings for the template.

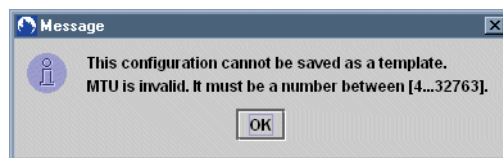
5. Click OK.

Your configuration is now saved as a template, and you can apply the template later when you configure objects of the same type. (See *Applying Templates* on page 149.)

To associate your new template with a Template Pak, see *Associating an Object Configuration with a Template Pak* on page 153.



NOTE: If the object configuration is invalid, you cannot save it as a template. The following message may appear:



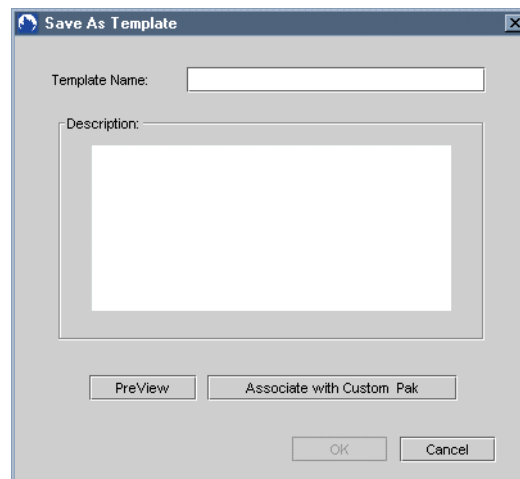
Associating an Object Configuration with a Template Pak

When you save an object configuration, you can associate the configuration with a Template Pak. The association lets you group a suite of configurations together under the same template name.

To associate an object with a Template Pak:

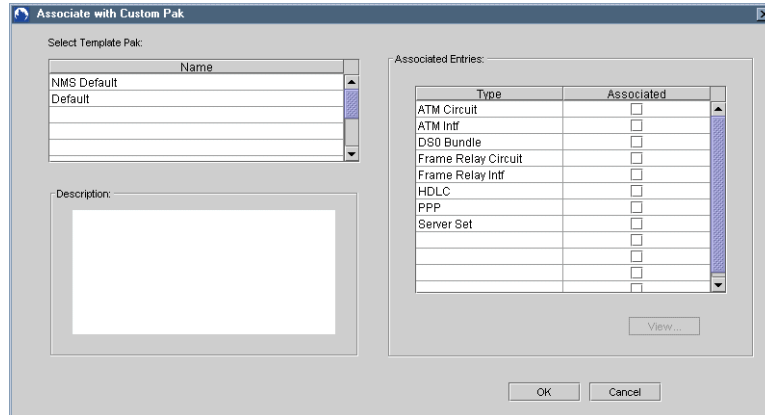
1. Open a configuration view for the object (for example, a DS0 Bundle configuration view).
2. In the Configuration menu, click Save As Template.

The Save As Template dialog box appears.



3. Click Associate with Custom Pak.

The Associate with Custom Pak dialog box appears with the names of existing Template Paks in the Name list.

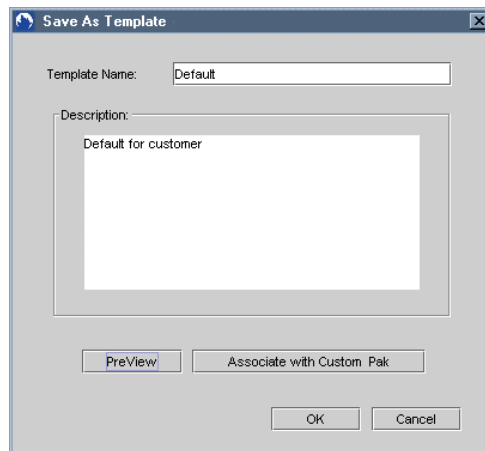


4. From the Name list, click the Template Pak with which you want to associate the current work area setting.

The Associated Entries list displays a list of the objects that you can associate with a Template Pak. The object(s) checked in this list are currently associated with the selected Template Pak.

5. Click OK.

The object settings in the work area are associated with the selected Template Pak. The Save As Template dialog box now has the name of the Template Pak you selected displayed in the Template Name text box.



6. Click OK. You can now apply the new Template Pak to future configurations of the objects associated with it.